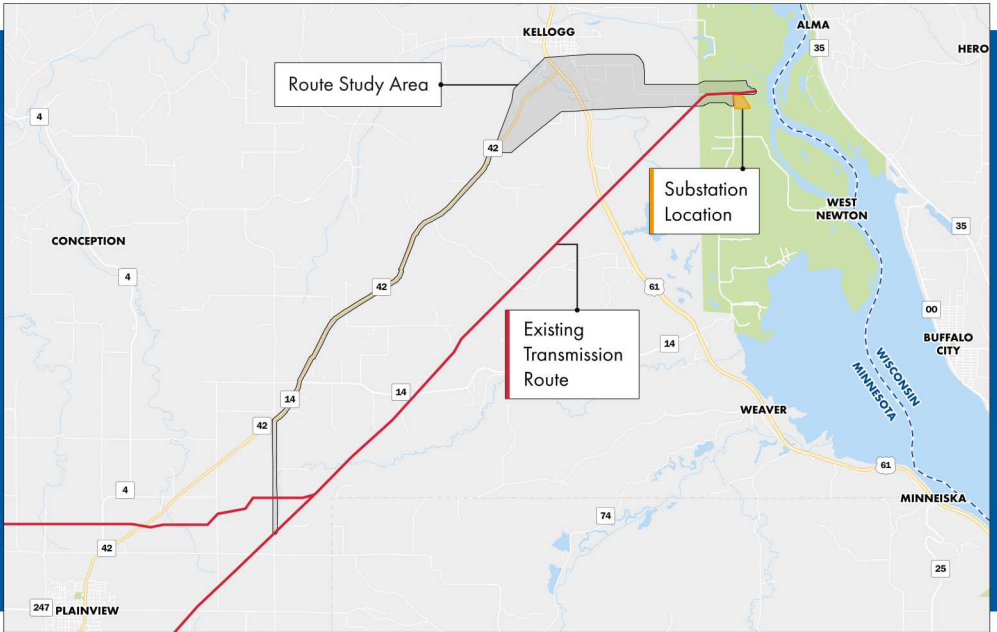


Wabasha Relocation Project



The Wabasha Relocation Project includes relocating about 14 miles of 161 kilovolt (kV) transmission line between Plainview, Minn., and Greenfield Township in Wabasha County, Minn. It also includes building a new substation east of the city of Kellogg, Minn.



Join us at our upcoming open house—in person, or online to learn more and provide your feedback on relocation of transmission lines in your area. Your feedback will inform the route development process.

IN-PERSON PUBLIC OPEN HOUSE



Thursday, November 9, 2023

11 am-1 pm OR 4-6 pm

📍 Saint Agnes Catholic Church
115 W. Belvidere Ave.
Kellogg, MN 55945

SELF-GUIDED ONLINE OPEN HOUSE



Available anytime Nov. 2
through Nov. 23



Scan the code or visit:
[dairylandpower.com/
wabasha-relocation-project](http://dairylandpower.com/wabasha-relocation-project)

FOR MORE INFORMATION

www.dairylandpower.com/wabasha-relocation-project

connect@dairylandtransmissionproject.com

608-791-2993